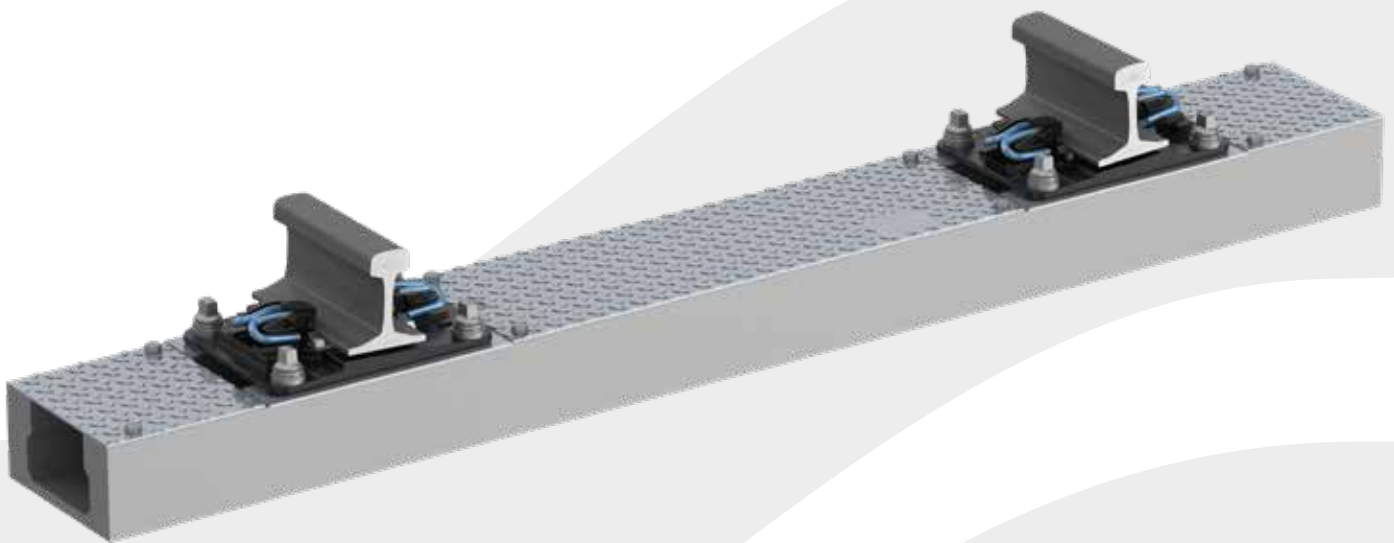
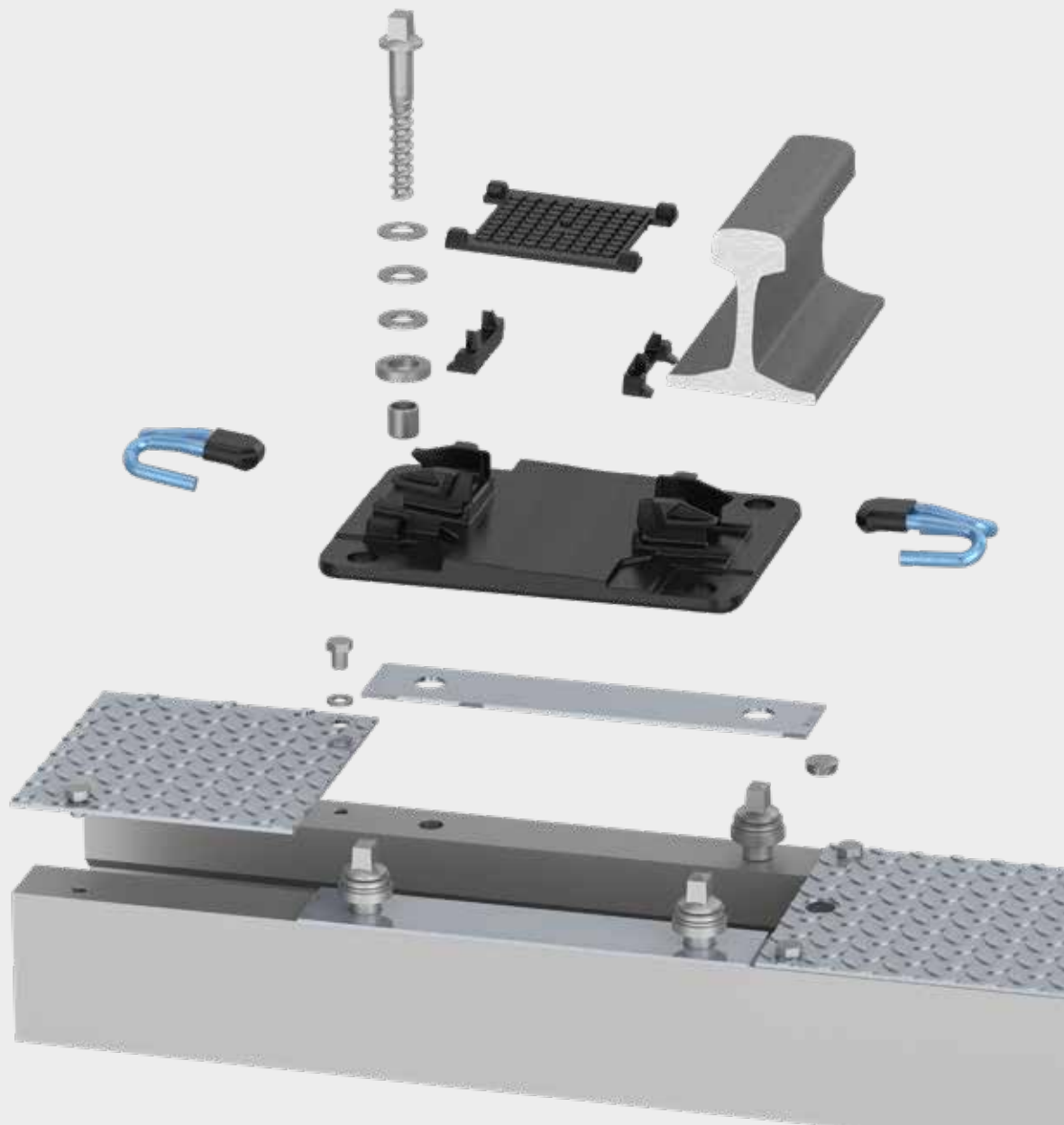


# SKS-B

SCHWIHAG Hollow Concrete Sleeper with Carbon Reinforcement



## The new SKS-B – for safe cable crossing in ballasted track

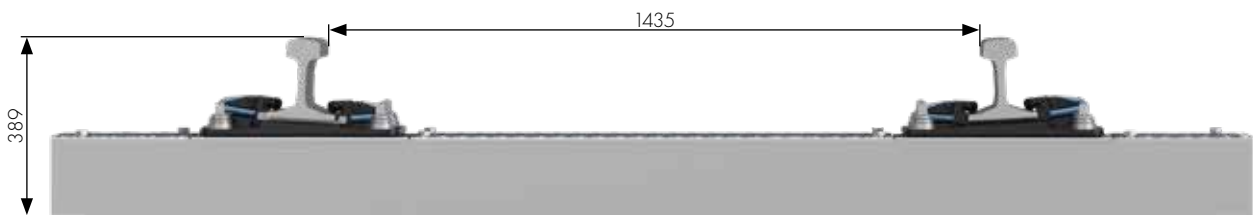


The Hollow Concrete Sleeper SKS-B by Schwihag is designed for the crossing of all types of cables or hoses (for telecommunications/signalling, electrical, or hydraulics) underneath the rail track.

It ensures a permanently safe cable crossing in track, even during mechanical maintenance and adjustment work. In track sections where under track crossings (UTX) are not possible or desirable, for example areas of shallow ballast due to structures or bedrock or where rapid installation with minimum disruption to the infrastructure is required, the safe installation of cables or lines can be guaranteed.



Due to the concrete and corrosion-free carbon reinforcement, the sleeper body will not suffer corrosion due to stray currents from DC conductor rail or traction bonds.



## TECHNICAL DATA

Gauge	1432 - 1438 mm depending on rail fastening system
Rail Fastening System	According to Customer Requirement
Electrical Resistance between two rails	> 3 kOhm, EN16341
Length of Sleeper	2600 mm
Weight of Sleeper	ca. 223 kg +/- 5%
Under Sleeper Pad	According to Customer Requirement



## Customer Benefit

- easy laying of cables/hoses without disconnection due to U-shape
- no stray current corrosion
- protected interior space due to covers
- carbon reinforcement results in reduction of concrete = smaller CO<sub>2</sub> foot- print.
- unlike steel reinforcement, carbon increases elasticity of the concrete and limits crack formation.
- the CO<sub>2</sub>-reducing substitution of cast iron/steel with concrete enables the use of domestic raw materials.

## Any Questions?

We would be pleased to inform you personally about all the features and benefits of our products and prepare a customised offer tailored to your needs. Don't hesitate to contact us:

Phone: +41 71 666 88 00

Mail: [info@schwihag.com](mailto:info@schwihag.com)



SWITZERLAND  
SCHWIHAG AG  
KONSTANZERSTRASSE 70-72  
8274 TÄGERWILEN

GERMANY  
SCHWIHAG GMBH  
AM OSTERGRABEN 5  
04435 RADEFELD

UK  
SCHWIHAG UK LTD.  
UNIT 30, COULMAN ROAD  
INDUSTRIAL ESTATE  
THORNE, DONCASTER DN8 5JU

USA  
SCHWIHAG TST INC.  
4000 MAIN STREET  
64030 GRANDVIEW MO

[www.schwihag.com](http://www.schwihag.com)  
[info@schwihag.com](mailto:info@schwihag.com)  
Phone: +41 71 666 88 00